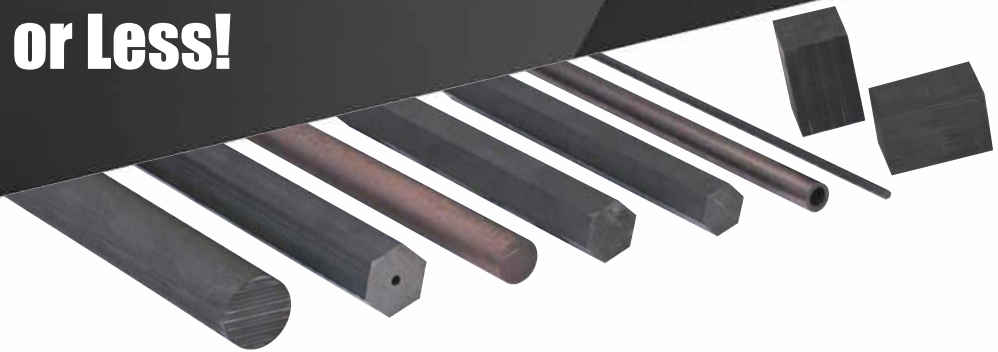


Graphite Blanks Precisely Machined to Your Specifications and Shipped in 24 Hours or Less!



Precision Graphite Solutions

Although many graphite grades may have similar specifications, even slight differences in the properties of the material can make a big difference in the performance and wear of the product.

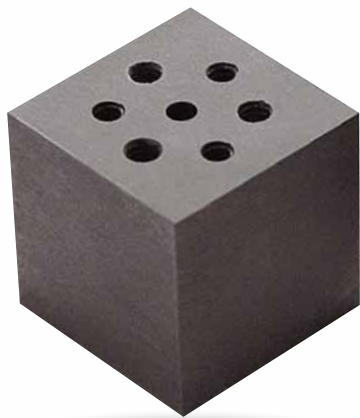
When you work with Graphel Carbon Products, you will receive the exact grade of material you ordered. We do not substitute materials – you can buy the grade of material required for your application with complete confidence you will receive the grade of material you ordered. Guaranteed!

For 50 years, Graphel Carbon Products has offered a wide range of high quality materials, manufactured by the industry leaders.

24 Hour Service

The graphite you need is in stock. Your order is quickly and precisely machined to your specifications.

Most orders ship same day or, at the latest, one day after your order is received.



Our Products – Graphite Materials

You can choose the graphite you need from a large selection of the highest quality materials in the market. If you are not certain about the best graphite material for your application, Graphel Carbon Products can assist you with technical support directly from the material manufacturer.

Graphel Carbon Products offers materials from the following manufacturers:

- Poco Graphite
- Ibiden Graphite
- Toyo Tanso

All of the above materials are available in:

- Sawcut Blocks
- Precision Ground Blanks
- Diameters

Graphel Carbon Products also offers blanks drilled and tapped for electrode mounting:

- System 3R
- Erowa Tooling
- Any electrode mounting pattern



Metallics

We also carry a wide selection of Metallics, including:

- **Molybdenum** – Sheet, rod, threaded rod or custom configurations to meet your furnace needs
- **Copper Tungsten** – Tubes, sheets, plates, squares and diameters
- **Silver Tungsten** – Rods, plate and diameters
- **Tellurium Copper** – Plates and diameters
- **Tungsten Carbide Tubing**
- **Precision Copper and Brass Tubing**
- **Multi-Channel Copper and Brass Tubing**



Three Convenient Locations to Serve You



www.graphel.com

GRAPHEL
Carbon Products



Minnesota Location

6251 McKinley St. NW
Ramsey, MN USA 55303

Phone: (763) 421-8400
(800) 747-4815

Fax: (763) 421-1304

South Carolina Location

19200 Asheville Hwy
Landrum, SC USA 29356

Phone: (864) 457-3333

Fax: (864) 457-3350

Graphel Home Office

6115 Centre Park Drive
West Chester, OH USA 45069

Phone: (513) 779-6166
(800) 255-1104

Fax: (513) 777-8959
(800) 472-7435