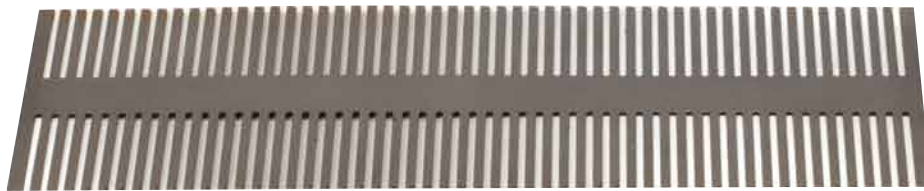
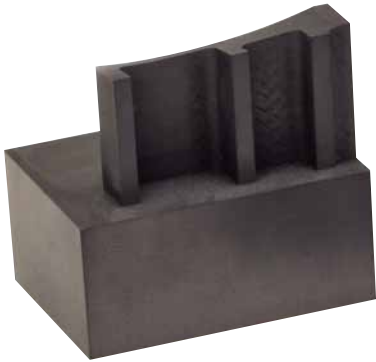


Precision Graphite Solutions

The Leader in Graphite Machining Innovation and Technology, Since 1965.



GRAPHEL
Carbon Products®

The preferred choice for all your company's graphite tooling and application needs.

Graphel Carbon Products knows graphite. We have built a strong reputation for our broad precision graphite machining capabilities, value added services and processes. Our capabilities vary from simple manufacturing to the most complex, tight tolerance parts.

We are a preferred supplier of EDM electrodes and graphite machined to print parts for some of the world's best known jet engine and aircraft manufacturers.

Our unwavering focus on quality and reliable delivery eliminates worry about your graphite needs.

And, our Production System satisfies the most demanding customers in the most demanding industries.

Quality – A Culture Committed to the Highest Levels of Quality

Quality is at the center of everything we do. We know our customers depend on us to deliver defect free products on time, every time.

- Quality system built and certified to ISO9001 and AS9100 standards.
- Quality Coaches on the shop floor in every department.
- Quality Team – led by a Six Sigma Black Belt Certified QMR
- Graphel Carbon Product's inspection technology and calibration cycles ensure Graphel meets your requirements.

Service – A Commitment to Service

- Planning, processes and people committed to deliver complex, tight tolerance parts faster
- Enhanced services technologies interact with your CAD data to build and inspect your parts
- 3 locations and 100+ machining specialists to provide world class service
- Quick, accurate quotes – many within 24 hours or less!

Innovation – A Commitment to Innovation

- Innovation is the life blood of any business. Our team is dedicated to become your premier graphite solutions provider.
- Every day Graphel Carbon Products works to improve our processes, drive out waste and provide the best value in the market
- People machine graphite and our people receive regular opportunities to learn and grow



EDM Services Group

Graphel Carbon Products EDM Services Group uses wire and sinker EDM to produce complex electrodes from specialty metals such as copper tungsten and silver tungsten.

Our EDM Group is NADCAP certified to perform process work on aircraft hardware – both wire and RAM EDM operations.

Using the most current CMM technology, the inspection process includes ongoing analysis by our Lean Six Sigma Black Belt Certified Quality Manager.

Quick turnaround and delivery is the hallmark of our EDM Group's success. For Production Contract Customers, aircraft hardware routinely is machined, inspected and certified within 24 hours.

Electrodes produced to print by the EDM Services Group are delivered to customers targeting the shortest lead times in the industry.

About Graphel Carbon Products

- 30,000 sq ft plant, Cincinnati, OH
- 10,000 sq ft plant, Ramsey, MN
- 35,000 sq ft plant in Landrum, SC
- 100+ graphite machining specialists
- Fully staffed engineering and quality assurance group
- ISO:9001:2008, AS9100, NADCAP Certified
- ITAR Registered

50 Years of Excellence - Providing Precision Graphite Solutions since 1965

To learn more about our service and receive a quotation, please call **1 (800) 255-1104**

We look forward to serving you!



Graphel Corporation
1 (800) 255-1104
www.graphel.com

Physical Address:
6115 Centre Park Drive
West Chester, OH USA
45069-3869

Mailing Address:
P. O. Box 369
West Chester, OH USA
45071-0369

GRAPHHEL
Carbon Products