

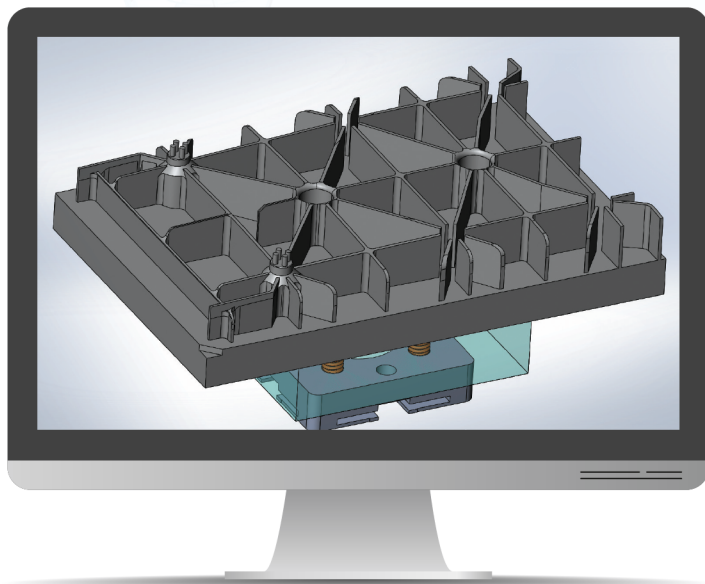
# AS & ISO Certified Design & Build Services Tooling Designed To Your Specifications

## Custom Design & Build Professional Services Complex EDM Tooling

We deliver continuous and sustainable value for our customers through collaboration and design.

Obtaining quality tooling can be a challenge. Graphel Carbon Products has been designing and building quality EDM tooling for over 30+ years for OEMs and Fortune 50 aerospace customers.

AS & ISO certified confidential precision EDM and inspection tooling design and build capabilities for aerospace, medical and power generation industries. Capabilities include: tooling for Sinkers/RAM EDM and Wire EDM.



Graphel Carbon Products' innovation extends to providing a complete tooling solution to the customer part design and build experience. Prevalent tooling design types include:

Electrode Holders, Part Holding Fixtures for EDM and Inspection Fixtures.

Common components requiring EDM tooling include:

- Engine Hardware
- Shroud Segments
- Nozzle Segments
- Honeycomb Strips
- Seals and Other Small Parts

[www.graphel.com](http://www.graphel.com)

**GRAPHHEL**  
Carbon Products



### Minnesota Location

6251 McKinley St. NW  
Ramsey, MN USA 55303  
Phone: (763) 421-8400  
Fax: (763) 421-1304

### Ohio Location

6115 Centre Park Drive  
West Chester, OH USA 45069  
Phone: (513) 779-6166  
Fax: (513) 777-8959

### South Carolina Location

19200 Asheville Hwy  
Landrum, SC USA 29356  
Phone: (864) 457-3333  
Fax: (864) 457-3350